

# Project Profile



**Telisys  
Engineered, Furnished  
and Installed**



**MODEL 200 Com Server  
Model 48B Phones**

**Analog Trunking**

**Flash Memory Voicemail  
(16 Ports, 140 Hours)**

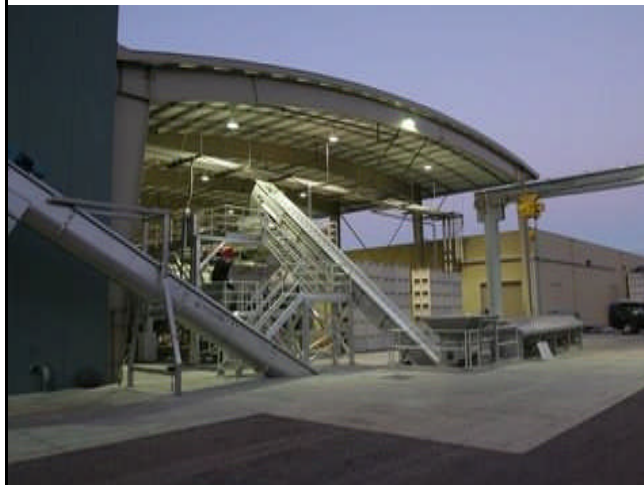
**Ballpark Cost  
\$15K–\$30k**

**Completed  
August, 2008**

About Us (Website)

**Who is Rack & Riddle?** Wine industry executives Bruce Lindquist Lundquist and Rebecca Faust joined forces with long time winemaker Oded Shakked and a dedicated team of production professionals to found Rack & Riddle—the ultimate custom crush and wine service company in an ideal location just north of Sonoma County.

14100 Mountain House  
Hopland CA 95449



**What we believe**

At Rack & Riddle, you're more than a client, you're our partner. From small boutique wineries to large multi-national wine producers and everyone in between, we provide peerless custom crush and winemaking services to all of our partners.

We work with you to ensure you receive exactly what you want and need from “grape to glass” or to simply assist you with your existing winemaking and production needs.

**Because of their remote location, Rack & Riddle needed a phone system that was not only reliable, but allowed them to move and add phones themselves without having to pay for vendor travel time. They chose the ESI CS200 with IP phones that plug into their data network. When they need to add a phone, we simply print out custom labels and send the newly labeled phone to Hopland via UPS.**

1241 CLEVELAND AVENUE  
SANTA ROSA, CA 95401

TELEPHONE 707-579-8595 FAX 707-579-1851

[www.telisys.net](http://www.telisys.net)